

7586307

380 MHz to 400 MHz

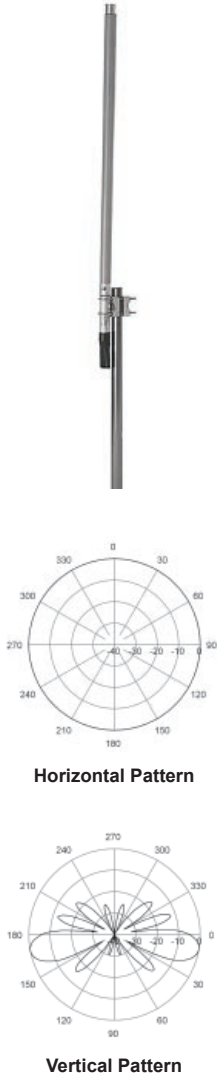
Colinear Antenna

Variable Tilt

PRELIMINARY

A heavy duty, variable electrical downtilt Colinear antenna designed for use in TETRA networks. This antenna has been optimized to provide a signal level at the horizon which is -5dB +/- 3dB below the main beam maximum. This adjustment range allows an operator to fine tune the coverage of each cell and minimize adjacent cell interference. The antenna is housed inside a high strength, glassfibre shroud and manufactured to the highest quality standards insuring long term, reliable operation.

Type 7586307



Electrical Specifications	
Frequency Range:	380 MHz to 400 MHz
Gain:	4.6 dBd
VSWR:	<1.5:1
Maximum Power:	250 W
Polarisation:	Vertical
Horizontal Beamwidth:	360°
Vertical Beamwidth:	20°
Electrical Downtilt:	10° - 15° Variable Tilt*
Impedance:	50 ohms
Termination:	7/16-DIN Female
Lightning Protection:	DC Grounded

* Electrical Tilt is adjusted by a knob at the bottom of the antenna.

Mechanical Specifications	
Materials:	Glass fibre shroud with 80 mm dia. Aluminium mounting section
Length:	2960 mm (excluding finial) 3120 mm (including finial)
Weight (excluding mount):	10 kg
Windloading @ 45 m/s:	210 N
Recommended Mounting Bracket:	0900638/00

Please order Mounting Bracket separately.