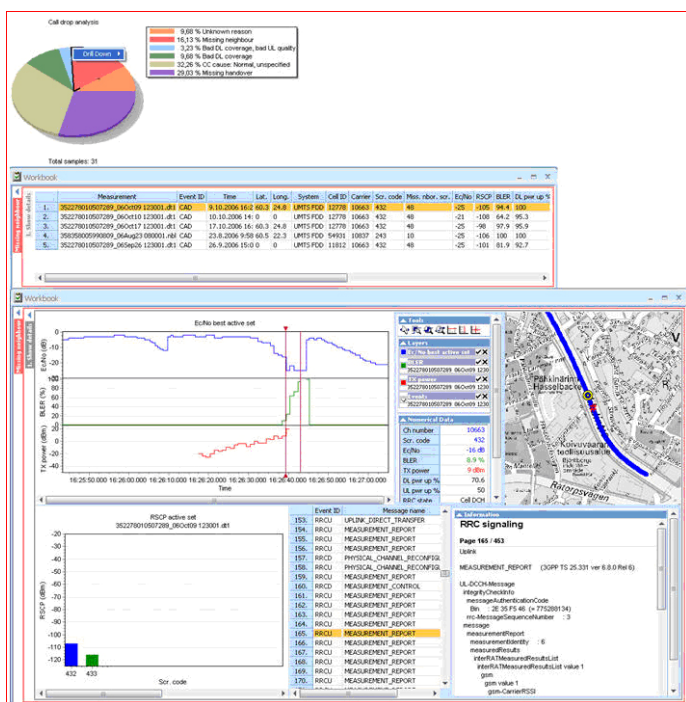


NEMO ANALYZE™

Nemo Analyze™ 5.12 is a powerful and versatile, cutting-edge post-processing system for performing benchmarking, troubleshooting and statistical reporting based on drive test data. The system scales from a standalone tool to an enterprise-level client/server solution and incorporates an innovative, low-maintenance database engine that has been designed and optimized specifically for high-performance post-processing of drive test data. Nemo Analyze helps you to streamline your processes by enabling you to automate the entire data processing chain from a drive test to an open workbook with analysis results.



Nemo Analyze offers a comprehensive set of technology-specific Key Performance Indicators for the newest wireless technologies and a wide range of data views that are known to offer the best visualization of drive test data on the market - and yet it is highly cost effective, easy to install and use, and it scales to meet the needs of organizations of any size.

Nemo Analyze offers support for all major wireless technologies, including TDMA, AMPS, cdmaOne, GSM, HSCSD, GPRS, EDGE, WCDMA, HSDPA, CDMA2000, TETRA, TETRAPOL, DVB-H, UMA, HSUPA, TD-SCDMA, and WiMAX. Supported measurement file formats include Nemo, Ericsson TEMS™, and EADS™ REMS TETRAPOL™.

The database engine combines the benefits of a heavy-duty database and a file-based analysis solution. Because of this, *the performance of queries that produce vast numbers of rows matches that of file-based solutions and is outstanding compared to typical database solutions.* From the maintenance perspective, Nemo Analyze functions exactly like file-based software and it requires little to none database administration, even with the enterprise-level client/server. The only practical limit for the database size in the Nemo Analyze concept is the physical size of the hard disk. With the client/server option, all measurement data in an organization can be centralized on a single server. This makes it possible to *ensure that your organization's entire body of measurement data is always securely stored, backed up and accessible to multiple simultaneous users.*

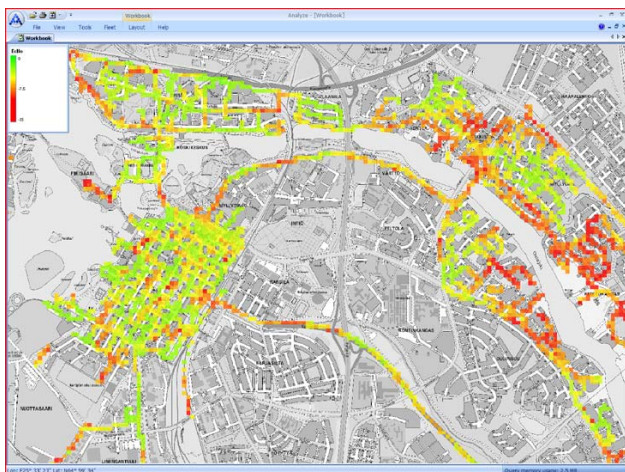
Meet the cutting edge of drive test data post-processing

Key Benefits

- **Scalability** – Enables organizations of any size to manage and analyze vast amounts of measurement data with optimal speed and efficiency
- **Newest technologies** – Every major new wireless technology is always supported
- **One platform** – One platform for all supported wireless technologies
- **Automation** – Data processing chain from a drive test to an open workbook with analysis results completely automated
- **Ease of use** – Intuitive and highly customizable user interface

Key Features

- GSM, GPRS, EDGE, WCDMA, HSDPA, cdmaOne, CDMA 2000, TDMA, TETRA, DVB-H, UMA, HSUPA, TD-SCDMA, and WiMAX supported
- Supported file formats include Nemo (Nemo Outdoor™, Nemo Autonomous™, Nemo Compact-i™, Nemo Handy™, and Nemo Q™), Ericsson TEMS Investigation (versions 6.0 – 9.0), Ericsson TEMS Investigation GSM (versions 5.0 onwards), Ericsson TEMS Investigation WCDMA (versions 3.0 onwards), Ericsson TEMS Automatic (versions up to 7.0), and Ericsson TEMS Pocket (versions up to 6.0/Z750i), and EADS REMS TETRAPOL.
- Scalable from a standalone tool to an enterprise-level client/server solution
- File-based, low-maintenance database with outstanding performance compared to typical database solutions
- Workbooks, pages within the workbooks, and data views on each workbook page, are all synchronized
- Comprehensive range of data views, including maps, grids, line graphs, bar graphs, pie charts, surface grids, color grids, and spreadsheets
- Easy-to-use graphical interface for designing and creating custom KPIs without any knowledge of SQL
- Automatable file upload and report/workbook execution from predefined folders



- Drill-down from troubleshooting query results to full event details
- Cutting-edge drive test data visualization with advanced features, including area binning based on a selected antenna's service area, signal power, etc., and the visualization of serving and neighboring cells as lines
- Measurement files automatically packed to take only 10% of the space they would otherwise require (hard disk space of 100 Gigabytes can contain up to 1 Terabyte of measurement data)
- Benchmarking of radio and application level metrics based on various attributes over hundreds of hours of data
- Comprehensive set of troubleshooting KPIs for GSM and UMTS, featuring, for instance, root-cause analysis
- Statistical reporting solutions include Nemo Analyze workbooks and spreadsheets, Crystal Reports® report templates, and Microsoft Excel® export templates
- Every operation can be configured to be automatically filtered based on a set of parameter threshold conditions.

Configuration Options

- Platform Options:
 - **Nemo Analyze Standalone Platform** for Windows® XP Professional (with standalone database)
 - **Nemo Analyze Client Platform** for Windows® XP Professional (with database server)
- Feature package options:
 - **Nemo Analyze Lite**, the limited report generation edition
 - **Nemo Analyze Standard**, the perfect solution for all post-processing and statistical reporting tasks
 - **Nemo Analyze Professional**, the specialist edition for advanced troubleshooting and custom KPI creation
- Technology Options:
 - **Nemo Analyze 5.X 2.5G** for GSM/GPRS/EDGE, AMPS/TDMA, CDMA2000
 - **Nemo Analyze 5.X 3G** for WCDMA and HSDPA (requires 2.5G)
 - **Nemo Analyze 5.X HSUPA** for HSUPA (requires 3G)
 - **Nemo Analyze 5.X WiMAX** for WiMAX mobile
 - **Nemo Analyze 5.X TD-SCDMA** for TD-SCDMA
 - **Nemo Analyze 5.X DVB-H** for DVB-H
 - **Nemo Analyze 5.X TETRA** for TETRA
 - **Nemo Analyze 5.X Tetrapol** for EADS REMS TETRAPOL
 - **Nemo Analyze 5.X Ericsson TEMS** for TEMS Investigation (versions 6.0 – 9.0), TEMS Investigation GSM (versions 5.0 onwards), TEMS Investigation WCDMA (versions 3.0 onwards), TEMS Automatic (versions up to 7.0), TEMS Pocket (versions up to 6.0/Z750i), TEMS technology options (GSM, GPRS, EDGE, WCDMA, HSDPA, and HSUPA)
- Database Server Options (SW: Analyze 5 database engine, ObjectStore DB Server, HW: Sun Solaris, SPARC Processor Architecture)
 - **Entry Level** (for up to 10 users, 300GB storage capacity)
 - **Mid Level** (for up to 30 users, 1TB storage capacity)
 - **Professional Level** (for 30+ users, 5TB storage capacity)

Version: October 2008. Information given in this publication is subject to change without prior notice. Anite Finland Ltd reserves the right to change specifications without prior notice. Nemo Outdoor™, Nemo Analyze™, Nemo Autonomous™, Nemo Compact-i™, Nemo Handy™, and Nemo Q™ are trademarks of Anite Finland Ltd. All other trademarks herein are the property of their respective owners.